

Rag kedhlow pella kestevevgh orth
For further information contact

Charlie Gray

charlie@cornwall365.org.uk
07921 830254

Fiona Wotton

fiona@cornwall365.org.uk
07921 829286

Cornwall 365 would like to thank
Cornwall & Isles of Scilly LEP for supporting this event
and we'd also like to thank the
European Commission at Europe House

CORNWALL 365 WHAT'S ON

is the comprehensive listings
website and guide for Cornwall.
Over 100,000 copies of our print
guide are distributed across
Cornwall throughout the year,
and the website is regularly
updated with fresh listings to
inspire you to get out and enjoy a
feast of events. Whether you're a
local or a visitor, Cornwall really is
open 365 days a year, offering
activities and entertainment for
every taste and budget.

Want to find out more
or get involved?

Contact Jenny and Holly:
Email: info@cornwall365.com
Website: cornwall365.com
Tel: 01209 312505



Cornwall 365 is part of Creative Kernow Ltd a registered charity



CORNISH CULTURAL CANAPÉS
TUESDAY 6 NOVEMBER
EUROPE HOUSE

BROUGHT TO YOU BY

CORNWALL 365

Visit
Cornwall

islands
partnership



Supported using public funding by
ARTS COUNCIL ENGLAND



CIOS LEP
VisitEngland



TONIGHT IS HOSTED BY



Cornwall 365

Cornwall is full of creative and cultural happenings and opportunities. We work with our fantastic network of tourism and cultural players to ensure Cornwall is on the map for culture, arts and heritage 365 days a year. We also own 'Cornwall 365 What's On', a comprehensive print and online events listings for Cornwall. Cornwall 365 is part of the Arts Council England and Visit England's Cultural Destinations programme.

www.cornwall365.com

Visit Cornwall

Visit Cornwall is the official Tourist Board and DMO for Cornwall, inspiring people to visit whether they are new to the region or life-long fans.

www.visitcornwall.com

The Islands' Partnership

The Islands' Partnership is the Isles of Scilly's principal representative of tourism and tourism-related businesses. Their role is to market the islands to the world and to represent wider business interests – for example horticulture, the food and drink industry, fishing, transport and retail.

www.islandspartnership.co.uk



Kernow 365, Keskowethyans
an Enesow ha Vysytyewgh Kernow
a'gas dynnergh dh'agan
Kanapeow Gonisogethek Kernewek
y'n Penncita

Cornwall 365, The Islands Partnership
and Visit Cornwall
welcome you to our
Cornish Cultural Canapés
in the Capital



Tonight is a showcase of Cornwall,
a taster of all that this beautiful destination has to offer.

We are using our Cultural Canapé model – mixing performance and immersive experiences with food and drink, exhibition, presentations, a VR experience and hands-on activities to bring to you cultural tourism highlights and new opportunities.

In your goody bag, you will find a USB card with further information about the organisations and people you will meet tonight as well as some additional content to inspire you.

**Meurastahwi a dhos ha govenek
a'gan beus hwi dhe omLOWENHE agas gorthugher**

**Thank you for coming and
we hope you enjoy your evening**

Towlen Haneth Tonight's programme

5.30 PM

A welcoming gin & tonic with pop-up performance
(don't forget to collect your name badge
and goody bag)

5.55 PM

A few words from your hosts & speakers

6.30 PM

Find & Seek: please enjoy all the canapés on offer
(both cultural and gastronomique)

7.30 PM

Ends



SPEAKERS

Keynote speaker : Simon Calder

Simon Calder is Britain's leading travel commentator and is known as "the man who pays his way" which means that he pays for his own travel. He began his career at Gatwick airport, where he cleaned out planes for Sir Freddie Laker and, later, frisked passengers (for a job, that is; not a hobby). He then started to write travel guidebooks and travel articles. Today, Simon is Travel Correspondent for The Independent. Simon also writes for the Evening Standard and the i newspaper, as well many other publications. Simon is a regular guest on national TV, often seen on BBC Breakfast, Good Morning Britain, This Morning, CNN, ITV News and Sky News.

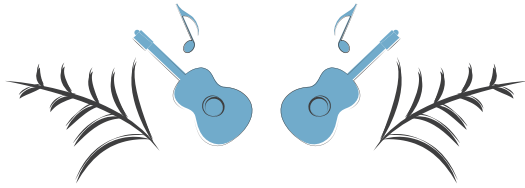
www.simoncalder.co.uk

Bard of the Cornish Gorsedh : Mark Elton

Mark Elton who is opening the event is a fluent speaker and ambassador for the Cornish language. He is active in promoting all things Cornwall in the London Cornish community. We would like to thank him and the Cornwall Council Cornish Language Department for all of the translations you are seeing and hearing tonight.

www.cornwall.gov.uk





PERFORMERS

Your entertainment this evening

Keith Sparrow – MC

Keith is an artist, actor, writer and performer based in Truro, Cornwall. As well as working with a variety of theatre companies, he performs with the Bowie Lounge, the Story Republic and runs manga drawing workshops.

The Story Republic

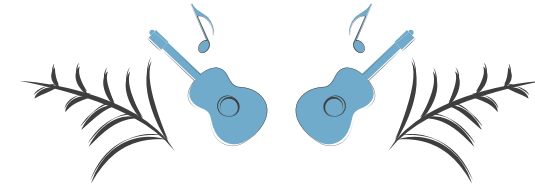
The Story Republicans are a Cornish ensemble of live literature performers who bring delight and surprise to any event, from door-steps to festivals, with their repertoire of poetry, short story and song. Their base is The Writers' Block near Camborne, an imaginative space dedicated to encouraging creative writing with schools, youth groups and the wider community – The Writing Centre for Cornwall.

www.thestoryrepublic.co.uk

Will Keating

Will Keating can usually be found singing with a Falmouth based male vocal group known as The Oggymen. This evening he will be singing a mixture of traditional and contemporary Cornish songs in both Cornish and English.

www.willkeatingcornwall.com



PERFORMERS

The Shall'ee Shanties

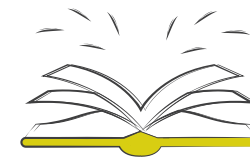
Formed from the winnowed husk of some deadbeat Wrecker's Wannabe singers; the Shall'ee Shanties have honed their craft from stamping their feet and singing like Crows to a not half-bad approximation of Shanty song Singers.

Kneehigh

Kneehigh are celebrated internationally as a theatre company who create original, inventive and engaging experiences for all. Meet Kneehigh performer Jenny Beare who will bring to life the tales and landscapes of Cornwall, through stories created by Kneehigh writer, Anna Maria Murphy.

Many of these stories can be found on Kneehigh's story walk app, Walk With Me, which is free to download:

www.kneehigh.co.uk/page/walkwith-me.php





FOOD & DRINK

Beautifully made canapés, fresh fish on the beach, a Cornish cream tea and a gin bar

Fifteen Cornwall

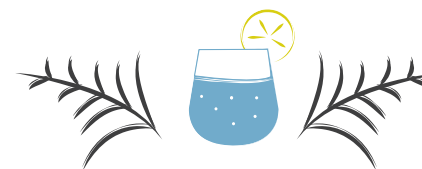
Food and drink are at the heart of Cornwall's cultural proposition and for twelve years, Fifteen Cornwall has shone a light on the very best of Cornish produce. The Fifteen canapé selection this evening celebrates the best seasonal Cornish food. Head Chef, Adam Banks, is thrilled to have brought his apprentices and pro-team to London to give you a flavour of his favourite foods and a sense of Cornwall's quintessential foodiness. Fifteen Cornwall is proud to bring to life the vibrant connections between Cornwall, London and Europe with Cornish food and young Cornish talent - and delighted to do that in this celebration of Cornish culture at Europe House.

www.fifteencornwall.co.uk

Colwith Farm Distillery

Colwith Farm is a 200 acre family owned farm located between Lostwithiel and Fowey, purchased by Stafford Dustow in 1904. In 2014 Stafford's great, great grandson Steve, began developing Cornwall's first potato vodka – Aval Dor (Cornish for potato) – using Colwith Farm King Edward potatoes. In 2015 he started producing Stafford's Gin derived from this potato vodka along with botanicals foraged on the farm. You can now visit Colwith, Cornwall's first single estate distillery, to find out how to make it.

www.colwithfarmdistillery.co.uk



FOOD & DRINK

Fish for Thought

The UK's leading online seafood supplier Fish for Thought delivers incredible fresh seafood that makes you feel good, from harbourside, straight to your door. Don't miss the virtual reality experience – transport yourself to a beach in Cornwall and enjoy a taste of the sea...

www.fishforthought.co.uk

Trewithen Dairy

Trewithen Dairy's gorgeous Clotted Cream is made to a traditional Cornish recipe (using milk from herds within a 25 mile radius of the farm) which means it has Protected Designation of Origin status.

Visit our 'Jam First' cream tea stand to taste!

www.trewithendairy.co.uk

Boddington's Berries

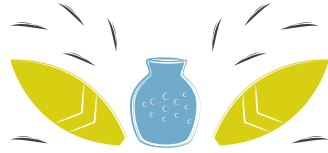
Boddington's Berries is a 70 year old family business which has transitioned from strawberry growing to jams and chutneys. Their preserves contain the highest fruit content that they can achieve when cooked to a natural setting point using NO artificial additives (preservatives or pectin). Their Strawberry Conserve contains 80g fruit in 100g of jam. www.boddingtonsberries.co.uk

Cornish Orchards

Cornish Orchards is an award-winning cider and soft drinks company based at Westnorth Manor Farm in Duloe, Cornwall. Working harmoniously with the seasons, they produce a range of premium ciders and soft drinks that are made from 100% freshly pressed apples and hand-blended by their team of expert cider makers.

www.cornishorchards.co.uk





ART, DESIGN & ACTIVITIES

There are so many exciting artists, makers, designers, producers and things to do in Cornwall. We're joined by a just tiny selection to whet your appetite...

Kiwi Print

Join Kiwi Print this evening to make your own fantastic print.

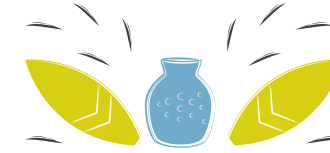
Kiwi Printmaking Studio is a beautifully located studio surrounded by the Cornish countryside. They produce colourful and exciting handmade prints and teach a range of printmaking workshops.

www.kiwiprintstudio.co.uk

Cultivator

Cultivator is a programme of business support and skills development for the creative industries in Cornwall and the Isles of Scilly. Working with artists and makers all over Cornwall, today they have brought a selection of work by Leach Pottery, Brickworks Ceramics, Anna Pope Jewellery and Helen Round (hand-printed homewares). All of these creators offer a unique experience, the chance to visit their workspaces and experience their craft.

www.cultivatorcornwall.org.uk



ART, DESIGN & ACTIVITIES

Falmouth Art Gallery

Falmouth Art Gallery is a small town council run museum with a collection of over 2,300 works and a passion for community engagement. They bring for your delectation the whimsical Cornish Cultural Triangle automata commissioned from local artist Keith Newstead. Henrietta Boex, the Director, is also here as a passionate advocate of the seventy museums that make up the Cornwall Museums Partnership.

www.falmouthartgallery.com

FEAST

FEAST harnesses the talents and energies of Cornwall's artists and communities to create opportunities for people to come together and enjoy high quality arts. FEAST commissioned the Cornwall show reel by film maker and director Brett Harvey.

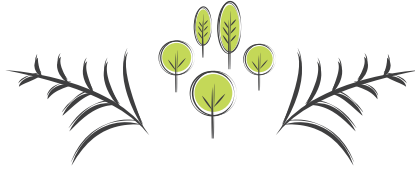
www.feastcornwall.org www.brettharvey.co.uk

Newquay Activity Centre

Based on Towan beach, Newquay Activity Centre is Newquay's longest running surf school and activity provider. Double gold winners of the Cornwall Tourism Awards and ranked number 1 on Trip Advisor, their activities guarantee grin-inducing fun for all ages and abilities. Surfing, bodyboarding, coasteering, kayak, snorkel, bush craft and Stand Up Paddleboard. Tonight join them to SUP down the beautiful River Gannel in Newquay – no wetsuits required.

www.newquayactivitycentre.co.uk





GARDENS

The gardens of Cornwall are wonderful places to visit. They are also amazing examples of multi-diverse businesses. They are conservation and heritage sites with cafés using local produce, retail outlets showcasing Cornish makers and unique venues for live events and performances.

The Eden Project

The Eden Project, an educational charity, connects us with each other and the living world, exploring how we can work towards a better future. Their visitor destination in Cornwall is nestled in a huge crater. Here, massive Biomes housing the largest rainforest in captivity, stunning plants, exhibitions and stories serve as a backdrop to striking contemporary gardens, summer concerts and exciting year-round family events.

www.edenproject.com



GARDENS

The Lost Gardens of Heligan

Heligan is one of the most mysterious estates in Britain. Lost to the brambles of time since the outbreak of WW1, this Sleeping Beauty was re-awakened in 1990 to become Europe's largest garden restoration project. Today Heligan's 200 acres are a paradise for explorers, wildlife and plant lovers and garden romantics.

www.heligan.com

Trebah Garden

Trebah Garden is a sub-tropical paradise with a stunning coastal backdrop. Discover the magic of this beautiful Cornish valley garden with over four miles of footpath. Explore under canopies bursting with exotic blooms. Follow vibrant tunnels of colour that cascade down to a secluded private beach on the Helford River. Relax amongst ever-changing vistas of mass planting in a garden established over 180 years ago.

www.trebahgarden.co.uk

Tregothnan

Since 1334 Tregothnan has been home to the Boscawen family and is one of a few remaining original working estates. Tregothnan has the largest private botanic garden in the UK and is a pioneer of foreign farming in Britain, experimenting with plants like the tea genus in a unique subtropical microclimate. In 2005 Tregothnan sold the first-ever tea grown in the UK, giving tea a home on British soil for the first time in history.

www.tregothnan.co.uk





Come to Cornwall, it's pretty easy to get here

Brittany Ferries

Founded in 1972 by proud Breton Alexis Gourvenec and a group of fellow Breton farmers wanting to export their cauliflowers and artichokes to the UK, Brittany Ferries is now the leading maritime carrier on the western and central Channel.

Cornwall Airport Newquay

Cornwall Airport Newquay is the largest commercial airport serving Cornwall and is ideally located as a gateway all that Cornwall has to offer. Routes operate from around the UK, including international connectivity hubs such as Manchester, Birmingham and London Gatwick, allowing for worldwide connectivity. The airport also offers direct connections with European destinations such as Dusseldorf, Stuttgart, Cork, Dublin, Alicante and Faro. New for summer 2019 will be a route to Copenhagen with Scandinavian Airline SAS. www.cornwallairportnewquay.com

GWR

Great Western Railway (GWR) provides high speed, commuter, regional and branch line train services. They help over 100 million passengers reach their destinations every year - across the West Country, South Wales, the Cotswolds, and large parts of Southern England. www.gwr.com

Isles of Scilly Travel

Isles of Scilly Travel operate transport services to the Isles of Scilly from four main departure points with regular flights across the UK and Europe connecting to direct Skybus flights flying from Land's End, Newquay and Exeter Airport. New for 2018 is the brand-new service Island Helicopters, flying direct from Land's End Airport in just 15 minutes along with the Scillonian III passenger ferry that departs daily from Penzance harbour during March-November.

www.islesofscilly-travel.co.uk



Cornwall is proud of its strong European links. We are delighted to welcome a few of our partners and projects this evening.

Morlaix Communauté

Celebrating the link between Cornwall and Brittany, Morlaix Communauté is here with information and tasters of some of the best of their region.

Finistère/Cornwall coopération

Since 1989, Finistère and Cornwall Councils have maintained strong links, with a Finisterian representative based in Cornwall supporting the creation and delivery of projects worth over €4.7 million, as well as numerous exchanges.

Urlaub Cornwall

Urlaub Cornwall is the only specialist Destination Management Company for Cornwall & the Isles of Scilly. Established to promote the region to the huge German speaking market for Cornwall, they work with operators and agents in Germany, Austria and Switzerland; now covering all in bound markets including the rest of Europe, Scandinavia, US and Australia.

www.urlaubcornwall.de

St Michael's Way

Michelle P. Brown is Chair of the Friends of St Michael's Way, the UK's only designated European Cultural Route, which traverses Cornwall and forms part of the Camino de Santiago. She is also a Board Member of the Cornish Ancient Sites Protection Network, which helps steward the early medieval and prehistoric sites of West Cornwall. www.stmichaelsway.net

Any Resemblance Films

Entrepreneurs de pointe – Leading from the edge – Bretagne – Cornwall. 40 entrepreneurs, 20 films, 2 regions at the edge of Europe. Who are the people doing business at the end of the land? What are their stories and is there any resemblance? www.legroupeouest.com/anyresemblance

